

## Simple Operations



○ HZL 353ZR-A

21

Built-in Sewing Patterns



○ HZL 355ZW-B

26

Built-in Sewing Patterns



○ HZL 357ZP-C

32

Built-in Sewing Patterns

## Quality Performance



HZL 353ZR-A



HZL 355ZW-B

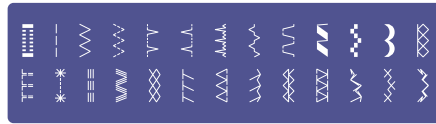


HZL 357ZP-C

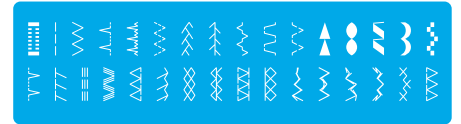
21 Built-in Sewing Patterns



26 Built-in Sewing Patterns

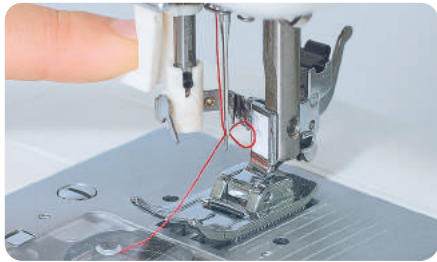


32 Built-in Sewing Patterns



## Automatic Needle Threader

The Automatic Needle Threader easily threads the needle without eyestrain and allows you to start sewing quickly.



## Drop Feed

You can lower the feed dog for sewing button or free-motion quilting by simply moving the lever.

\* Quilting foot is an optional part.



## White LED Light

Brightens the needle entry area. LED light will not heat up even during long operations.



## Automatic One-Step Buttonholing

By placing button on the buttonhole foot, the machine conveniently sews buttonholes automatically according to the size of the button.



## Presser Foot Pressure Adjustment

Presser foot pressure can be adjusted for better sewing results according to the type of materials to be sewn.

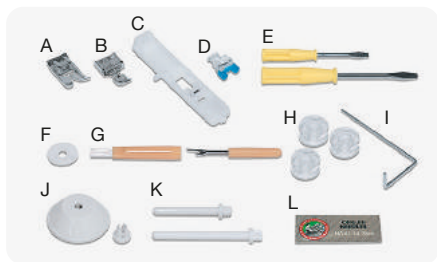


## Free Arm and Accessory Box

The Auxiliary Box slides off for the free arm sewing. Also standard accessory parts can be neatly stored in the Auxiliary Box.

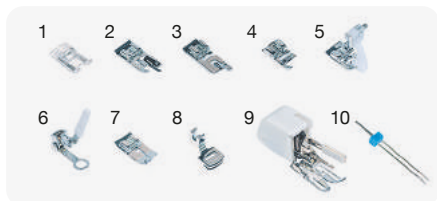


### Standard accessories



- A. Standard presser foot
- B. Zipper foot
- C. Buttonhole foot
- D. Button sewing foot
- E. Screwdriver (L&S)
- F. Spool pin felt
- G. Seam ripper/brush
- H. Bobbin (3x)
- I. Quilt guide
- J. Spool cap
- K. Auxiliary spool pin
- L. Pack of needles (3x)
- M. Hard case

### Optional accessories



- 1. Decorate stitch foot
- 2. Overcasting foot
- 3. Rolled hemming foot
- 4. Cording foot
- 5. Blind stitch foot
- 6. Quilt foot
- 7. Straight stitch foot
- 8. Gathering foot
- 9. Walking foot
- 10. Twin needle

### Specifications

Sewing Speed	Max. 750 s.p.m.
Stitch Length	Max. 4mm
Zigzag Width	Max. 7mm
Lift of the Presser Foot	2-step lifter Max. 9mm
Needle	HA x1 #9-#18
Dimensions	410 (W) x 308 (H) x 177 (D) mm
Weight	7.1kg/15.7lb (Machine only)
Hook	Horizontal Rotary Hook

# JUKI

JUKI CENTRAL EUROPE Sp. z o.o. ul. Polezki 21, 02-822 Warsaw, Poland

Tel.: +48 22 545 04 00 / Fax: +48 22 545 04 11

www.juki.pl / www.facebook.com/JukiSewlt / e-mail: juki@juki.pl